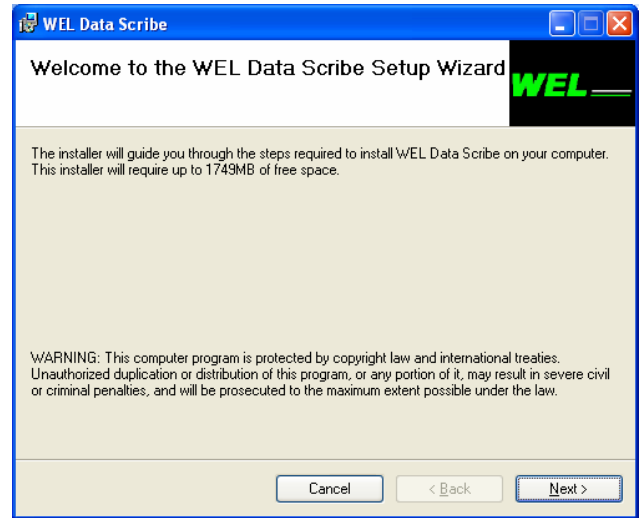
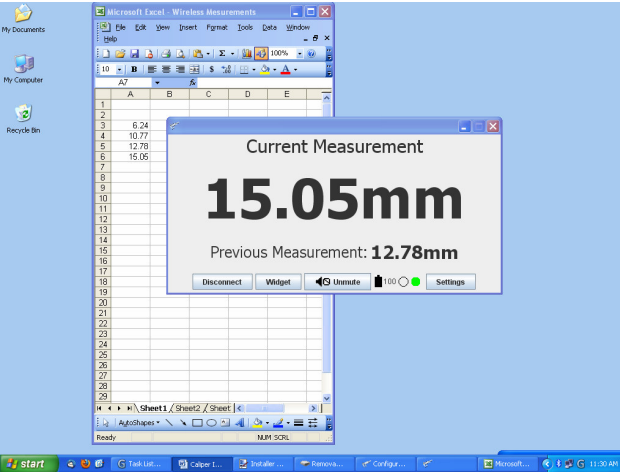


Caliper QUICK START

In a few minutes you will be able to take measurements with your WEL Wireless Digital Calipers and send the results direct to Excel, Word or Access.



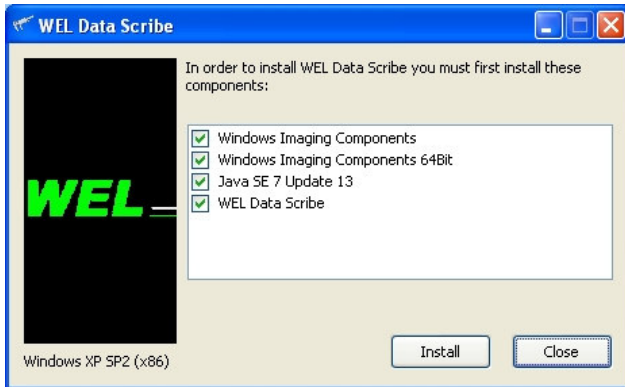
Make sure you have the available disc space. Please note, if only the WEL Data Scribe is ticked then less than 50MB is required.

Click **Next**

Installing Software and Bluetooth

Insert the Bluetooth dongle into an available USB port.

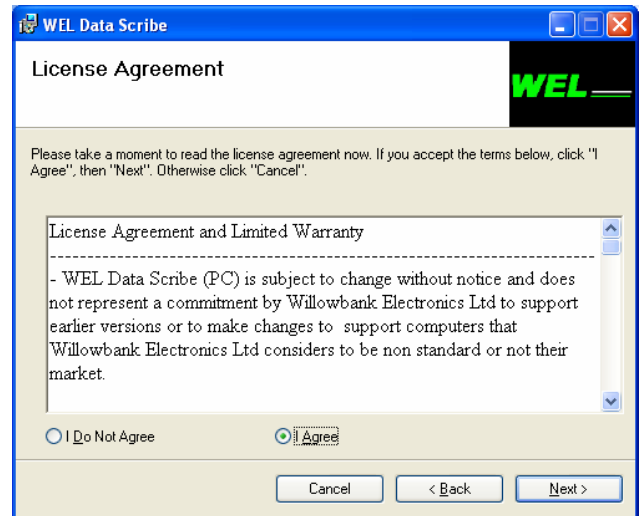
Insert Disc into CD drive – it should autostart. If autostart does not occur, open the CD folder and double click the **Installer** file.



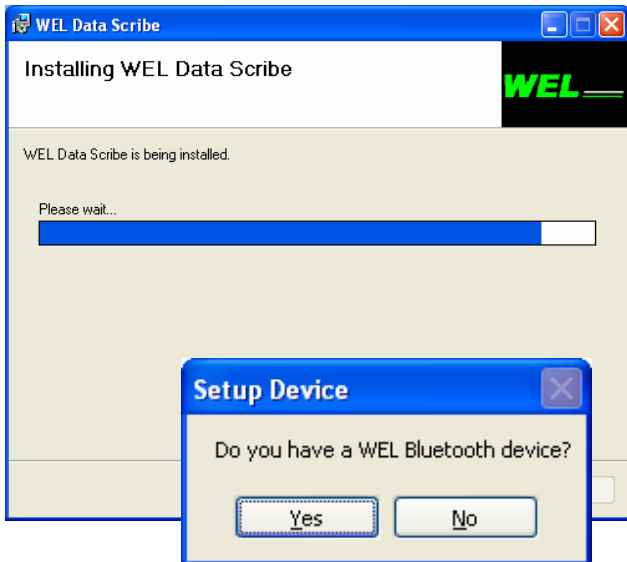
A green tick indicates items to be installed.

Click **Install**

If the Windows Imaging Components and or the Java SE 7 Update 13 is required you may have to wait a few minutes.



Read the License Agreement and if you agree continue.



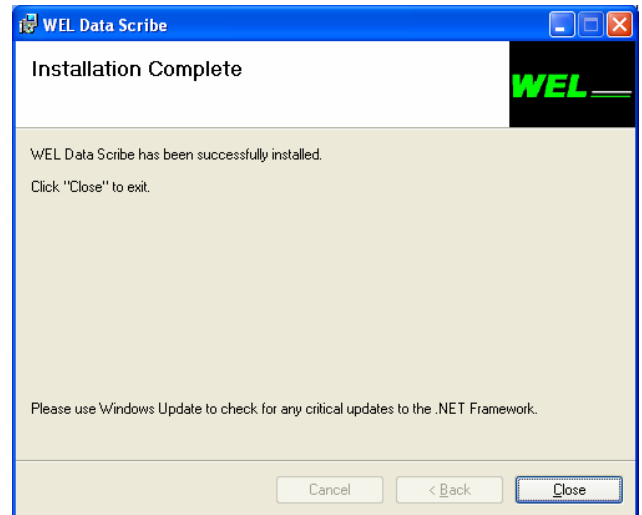
Make sure that the Bluetooth Dongle is plugged into a USB port and the calipers are turned on (press **READ**)!

Click **Yes**

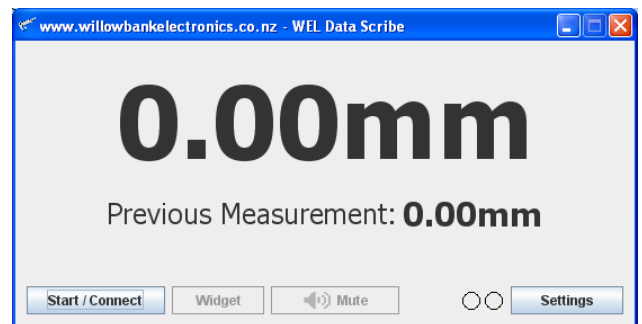
While the computer is finding the calipers, please press the **READ** button every few seconds



Once other Bluetooth devices are off, click **OK**
Continue pressing the **READ** button every few seconds.

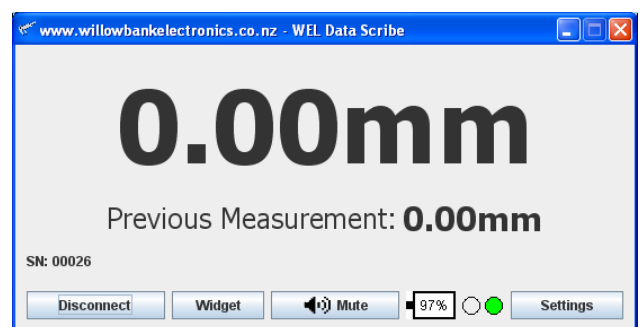


Click **Close**



Click the **Start/Connect** button

The Serial Number should be displayed along with the battery condition if the Bluetooth connection is functioning correctly.

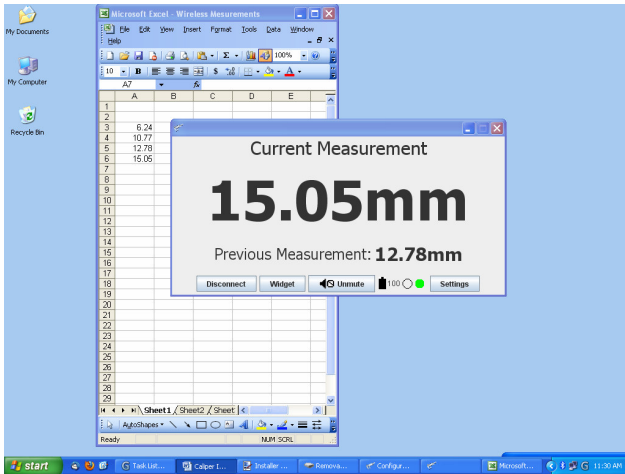


If the battery shows low, it can be recharged by plugging the calipers into a USB port.

Press the READ button on the calipers and the measurement will appear in the window.

To send the measurements to Excel, Word or Access, simply open the application, click where the measurements are to go and press the **READ** button.

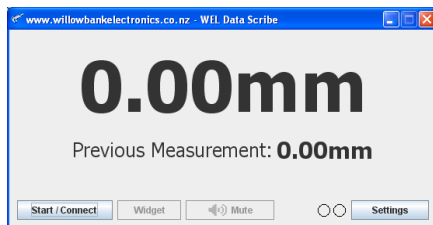
The next measurement will appear in your desired application.



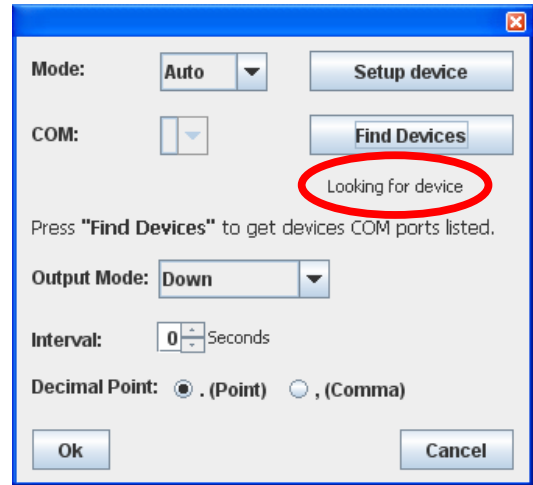
Click the desktop icon to activate the software in the future.



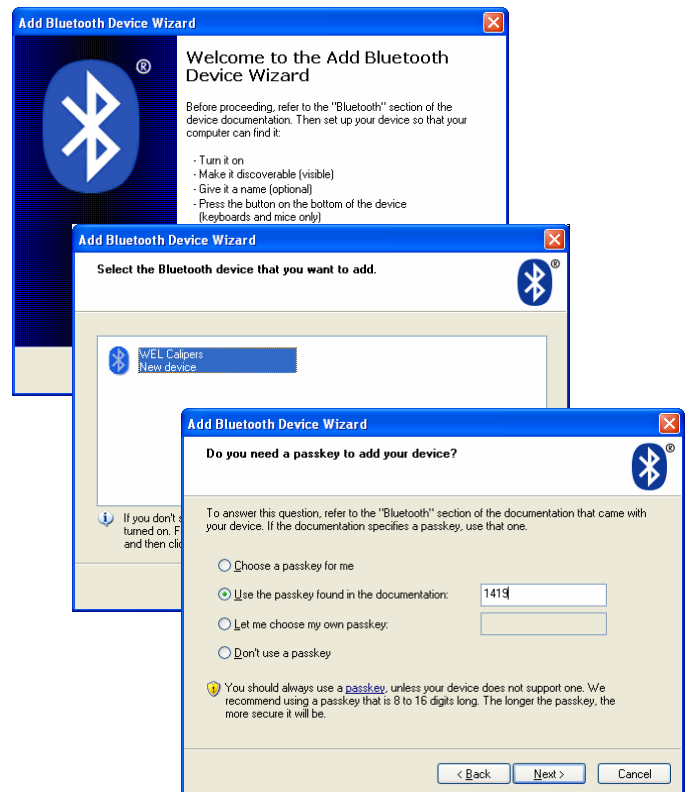
Trouble Shooting



If measurements are not received by the computer, click the **Settings** then the **Find Devices** button. Make sure you press the **READ** button every few seconds.



If the problem remains you may need to check the Bluetooth pairing via the Control Panel in Windows.



Enter pass key 1419 and click next.

On some computers a simple reset is all that is required to allow the computer to run