



WEL Data Scribe – Refractometer

Features

- USB 2.0 specification
- Bus powered, no external power supply needed.
- Cable length: 1m
- Compatible with Windows 7 64-bit and above.

WEL

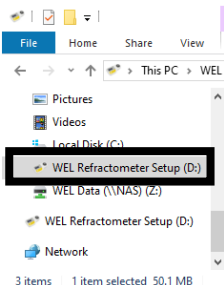
www.welnz.com

Setting up your Refractometer

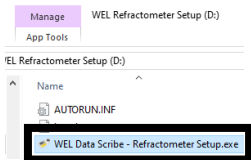
1. Insert the provided USB flash drive into the computer.
2. Click the **File Explorer** icon in your task bar.



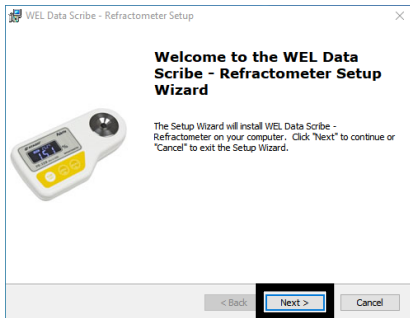
3. Click on **“WEL Refractometer Setup”** in the navigation pane.



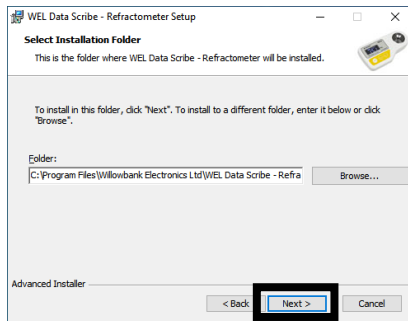
4. Double click on **“WEL Data Scribe – Refractometer Setup.exe”**



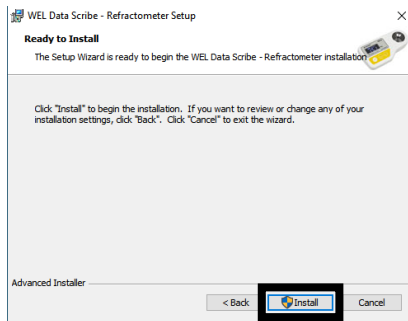
5. Click on **“Next”**



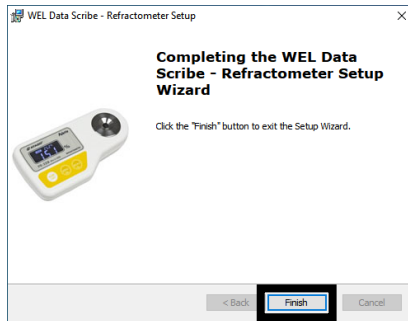
6. Click on **“Next”**




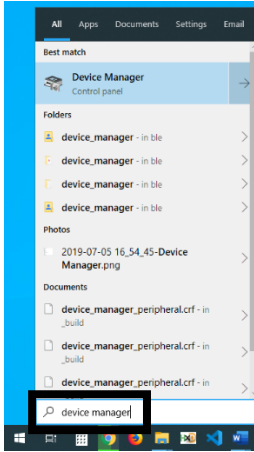
7. Click on **“Install”**



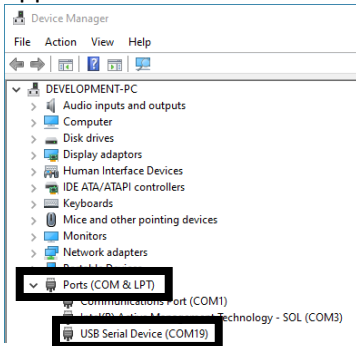
8. Click on **“Finish”**



- Press the  key and type in “device manager” then press the **Enter** key.



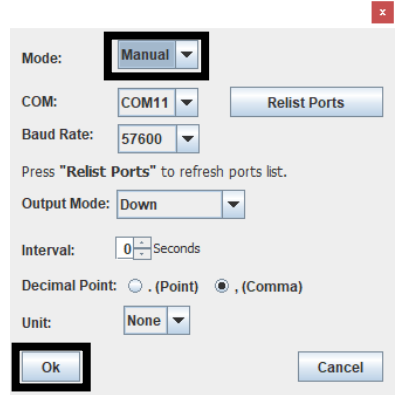
- Click on “**Ports (COM & LPT)**”.
- Plug in the Refractometer.
- Record the COM port that appears.



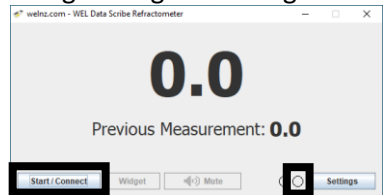
- Open “**WEL Data Scribe - Refractometer**” and click on “**Settings**”



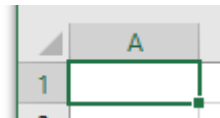
- Select the “**COM**” port for the Refractometer you recorded in step 12 then click “**OK**”.



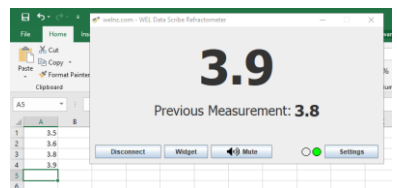
- Click “**Start / Connect**”.
- The green light should go solid.



- Open **Excel** and select the cell you want the measurements to start from.



- Press the “**Start**” button on the refractometer and the measurement will be inserted into **Excel**.



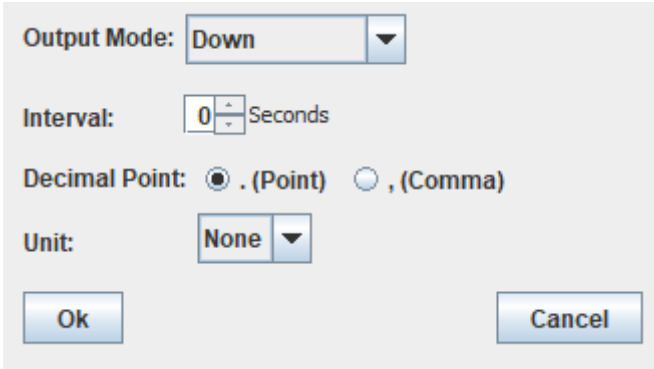
Settings

Output Mode: Allows the user to choose how the measurements are input into Excel.

Interval: Should be left as **0** for the refractometer.

Decimal Point: Allows for the decimal separator to be changed to match the country.

Unit: Should be left as **None** for the refractometer.



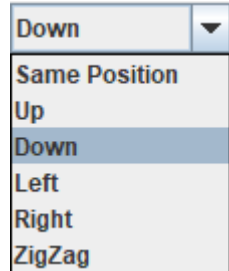
Output Mode: Down

Interval: 0 Seconds

Decimal Point: . (Point) , (Comma)

Unit: None

Ok Cancel



Down

Same Position

Up

Down

Left

Right

ZigZag

System Requirements

- USB Port
- Windows 7 64-bit and above

Package Contents

- Refractometer
- Manual
- PC software stored on USB Flash Drive

Specifications

Provided USB lead length	1m
Maximum USB lead length	2.5m